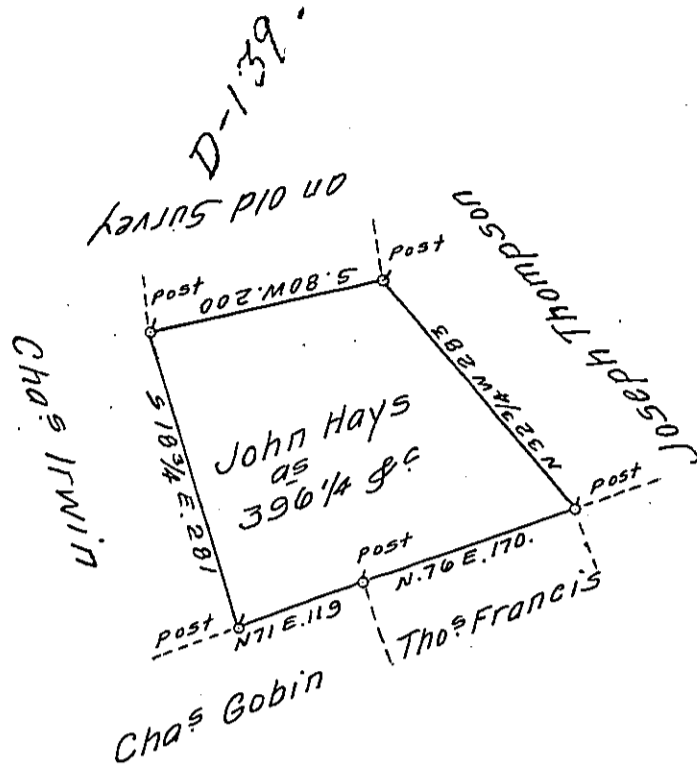


Sug. Loaf -
Luzerne.

W



A Draft of a tract of land Called— Situate adjoining Land Sur-
veyed for Joseph Thompson & others in the County of Luzerne
Containing three Hundred & Ninety Six Acres 1/4 & Allow^e Surve-
yed for John Hays the 30th day of Sep^r 1793. by Virtue of a Warrant
dated the 13th day of June 1793.

To

Daniel Brodhead Esq^r }
Surv^r Gen!

by

W^m Gray D. S.

IN TESTIMONY that the above is a copy of the original remaining on file in
the Department of Internal Affairs of Pennsylvania, made
conformably to an Act of Assembly approved the 16th day of
February, 1833, I have hereunto set my Hand and caused
the Seal of said Department to be affixed at Harrisburg,
this fifth day of April 1911.

Henry Hoult
Secretary of Internal Affairs.